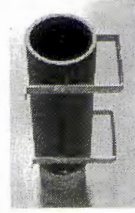
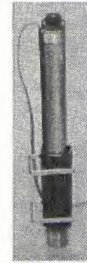
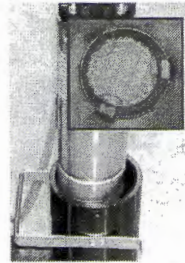


The Kit KIOS is an accessory that allows to install in horizontal an electric submerged pump for wells by 4" guaranteeing a flow of optimal water for the cooling of the same one.

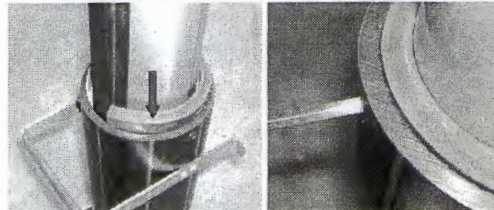
You positions the Kit KIOS in vertical and the gasket of estate is extracted it posts inside the pipe in polyethylene.



You gently inserts the electric submerged pump inside the Kit KIOS, he centers the motor of the electric submerged pump in the special wedges set to 120° between them and it supports him the same on the fund of the filter.



You shapes the special gasket of estate among the pump and the pipe in polyethylene up to make coplanar with the same *. Done this it settles the gasket in position of job shutting with the special grubs screws (to use a key hexagonal male, dim. 5).



** To facilitate the insertion of the gasket can be anointed the same one with oil or fat for food use. (N.B. it is necessary to trim the gasket of estate to suit for the you cover cable of the electric submerged pump. The aspiration of the electric submerged pump must be sets under of the gasket of estate).*

The electric submerged pump is ready for the installation in horizontal and she can have fixed to the ground with four screws M5.

